

**BRIGGS**®

EQUIPMENT MEXICO

info@BriggsEquipmentMexico.com

55-9020-5042



## H40-60XT SERIES

INTERNAL COMBUSTION COUNTERBALANCED FORKLIFT

**STRONG PARTNERS.  
TOUGH TRUCKS.™**

# CUSTOMIZATION THAT COSTS YOU LESS

Business is all about maintaining momentum in the face of change. The sense that, no matter what is happening in the industry, you are moving forward. Manufacturing, in particular, is in the midst of a technological overhaul that is transforming the look, systems, and processes of the modern factory.<sup>1</sup> So how can a business keep pace with the revolution and stay ahead of the competition? Customization.

**What if you could customize your forklifts to your applications and tasks, to meet changing customer demands and your company's productivity goals?**

With the economical Hyster® XT truck, you'll get access to the same Hyster® Variable Power Technology™ that's in our premium Fortis® series. With this capability, you can customize your performance and fuel efficiency based on your needs. You'll be able to run in fuel-efficient mode when production is less demanding, yet switch to a higher performance mode when deadlines are looming.





**BRIGGS**<sup>®</sup>  
EQUIPMENT MEXICO  
info@BriggsEquipmentMexico.com  
55-9020-5042

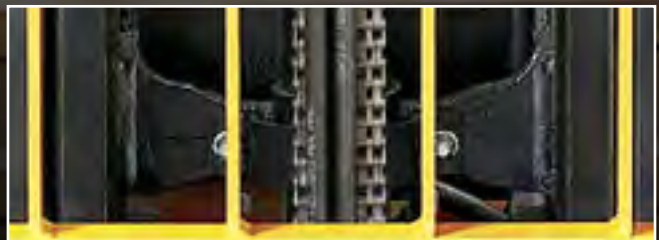
**BRIGGS**

EQUIPMENT MEXICO

info@BriggsEquipmentMexico.com  
55-9020-5042



*The steer axle assembly is made of cast ductile iron. Some competitors use welded plate structures that can suffer from cracks or deformation from shock loading, or steel plate structures that can bend.*



*Mast channels are made from high-strength, rolled steel with cast cross members for strength and resistance to deflection.*



# **DURABLE PRODUCTS THAT REDUCE DOWNTIME**

59% of Fortune 500 companies experience 1.6 hours of downtime per week.<sup>2</sup>

**How much money is your company losing every minute you're down?**

By investing upfront in resources that feature longer service intervals, you have the ability to decrease your cost of operations, as well as increase uptime and efficiency. Industrial grade mast components, such as cast cross members and thicker channels, decrease deflection and increase strength. And when you have 6000 pounds of pressure sitting on the axle, you don't want any problems. You'll have a tough and durable cast steer axle with the Hyster® XT truck.

Hyster has engineered a patented stability system that every operator can appreciate. You'll find the Hyster Stability System (HSS®) requires less maintenance than the competition's system due to fewer grease points and longer service intervals than the competition. Fewer complicated parts means less risk of problems, enhancing uptime for your operation.

The benefit to your company is that you have the opportunity to minimize disruptions and downtime. As a result, you can increase your productivity and optimize your existing resources without having to purchase new equipment to meet changing demands.

# EVERYTHING ABOUT IT IS TOUGH. EXCEPT SERVICING IT.

Today's mechanics are faced with a continuous stream of new technology that must be quickly learned and mastered. They practically need an IT degree to diagnose the sensor and computer glitches in machinery. Manufacturers once assumed computerization would make repairs easier.<sup>3</sup> The opposite has occurred.

What if you could service your trucks quickly and easily **without an IT degree?**

You won't realize the full benefits of the Hyster® XT lift truck until after your first service event experience. That's when its "cowl-to-counterweight" access and one-piece floorplate reveal other engineering advantages designed to keep your truck, and your operation, running smoothly. Configured so you don't have to remove the LP tank to open the hood, the Hyster XT series is clearly easier for you to service.





**BRIGGS**  
EQUIPMENT MEXICO  
info@BriggsEquipmentMexico.com  
55-9020-5042



*Integrated dash display shows error codes and warning indicators, reducing downtime to perform truck diagnosis.*

*Rear-opening, one-piece hood and easy-to-remove, one-piece floor plate which requires no tools.*





**STRONG PARTNERS.  
TOUGH TRUCKS.™**



**BRIGGS**®

EQUIPMENT MEXICO

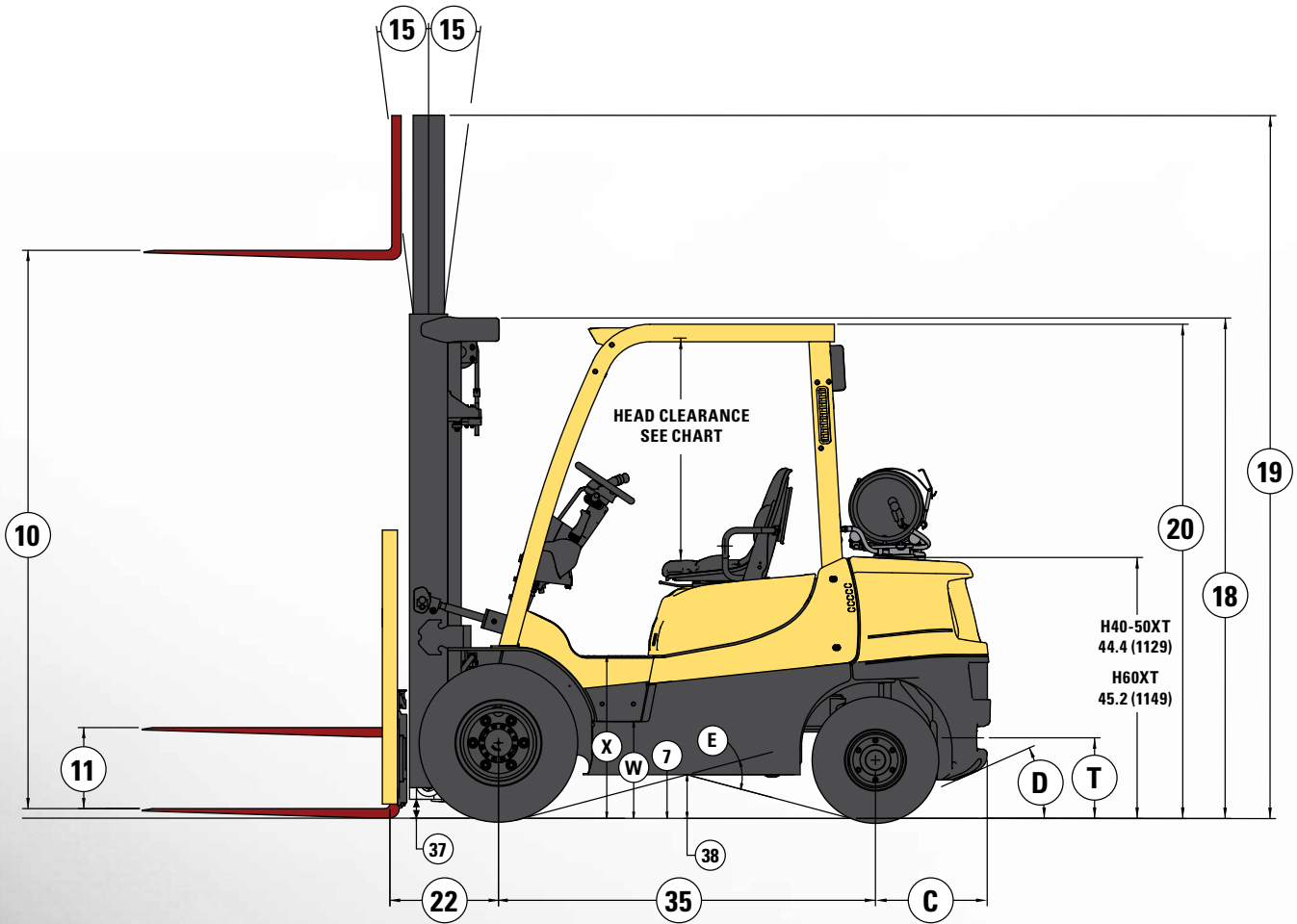
[info@BriggsEquipmentMexico.com](mailto:info@BriggsEquipmentMexico.com)

55-9020-5042

# **H40-60XT SERIES**

## TECHNICAL GUIDE

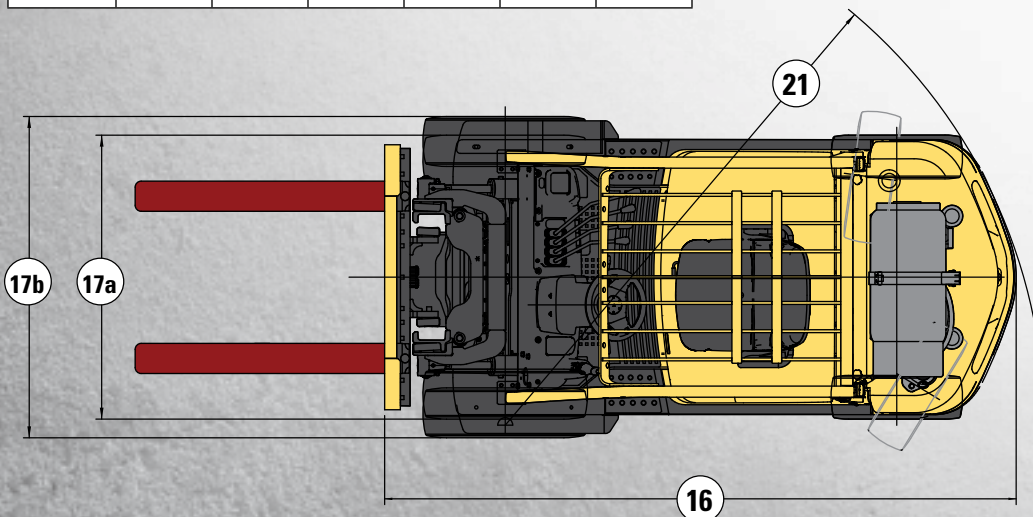
# > DIMENSIONS



TRUCK MODEL	C	D	E	T	W	X
	in (mm)	percent	percent	in (mm)	in (mm)	in (mm)
H40XT	17.1 (434)	70	53	6.6 (168)	13.7 (349)	27.6 (702)
H50XT	19.5 (495)	55	53	6.6 (168)	13.7 (349)	27.6 (702)
H60XT	20.4 (518)	58	58	7.4 (168)	14.5 (369)	28.4 (722)

HEAD CLEARANCE			
Seat Type	Standard OHG*	Optional OHG*	
Non-Suspension	46.9 (1192)	43.0 (1092)	36.9 (939)
Full-Suspension	46.9 (1192)	N/A	N/A

\* Seat in depressed position



Circled dimensions correspond to the line numbers on the tabulated chart inside the Technical Guide. Dimensions are in inches (mm).



# SPECIFICATIONS

		HYSTER COMPANY							
		H40XT*		H50XT*		H60XT*			
GENERAL	1	Manufacturer Name	Hyster Company						
	2	Model	H40XT*		H50XT*		H60XT*		
		Engine	PSI 2.4L						
	3	Rated Capacity	4000 (1814)		5000 (2268)		6000 (2722)		
	4	Load Center, Distance	24 (610)						
	5	Power Type - LPG, Dual Fuel	LPG	Dual Fuel	LPG	Dual Fuel	LPG	Dual Fuel	
	6	Operator Type	Sit-Down Rider						
	7	Step Height	16.3 (415)				17.1 (435)		
	8	Tire Type - Cushion, Solid, Pneumatic	Pneumatic						
DIMENSIONS	9	Wheels, Number - Front/ Rear	2x/2						
	10	Lift Height, Top of Fork (TOF)	129 (3292)				126 (3209)		
	11	Lift Heights, Standard Limited Free Lift (LFL) w/LBR (TOF)	5 (140)						
		Lift Heights, Optional Full Free Lift (FFL) with LBR (TOF)	58 (1490)						
	12	Standard Carriage Width	42 (1067)						
	13	Forks, Thickness x Width x Length	1.6 X 3.9 X 42 (40 X 100 X 1067)						
	15	Mast Tilt Angles, Forward/Backward	6/6						
	16	Length To Face of Forks	99.5 (2528)		101.9 (2589)		106.3 (2701)		
	17a	Overall Width, Standard Tread	45.7 (1162)				46.9 (1191)		
	17b	Overall Width, Wide Tread	52 (1322)				52.2 (1326)		
	18	Height, Standard Mast - Lowered	86 (2170)				89 (2245)		
	19	Height, Standard Mast - Extended with LBR	147 (3715)				175 (4330)		
		Height, Standard Mast - Extended without LBR	154 (3904)				154 (3905)		
	20	Height, Standard Overhead Guard	87.7 (2228)				88.6 (2250)		
		Height, Optional Overhead Guard	83.8 (2128)				84.6 (2150)		
	21	Turning Radius, Minimum Outside (OTR)	85.7 (2178)		88 (2236)		91.5 (2324)		
	22	Length, Center of Wheel to Face of Forks	18.5 (471)				19 (483)		
	23	Aisle Width, Right Angle Stack (Add Length of Load)	104.3 (2649)		106.6 (2707)		110.3 (2802)		
	24	Equal Aisle, 90-Degree Intersecting Aisle	79.9 (2030)		80.9 (2056)		83 (2108)		
	PERFORMANCE	25	Travel Speed, Powershift Transmission RL/NL	11.4/11.6 (18.4/18.6)				12.3/12.4 (19.8/20)	
		26	Lift Speed, Standard 2-Stage LFL RL/NL	128/134 (0.65/0.68)				112/118 (0.57/0.60)	
			Lift Speed, Optional 3-Stage FFL RL/NL	120/126 (0.61/0.64)				106/112 (0.54/0.57)	
		27	Lowering Speed, Standard 2-Stage LFL RL/NL	114/98 (0.58/0.50)					
			Lowering Speed, Optional 3-Stage FFL RL/NL	114/98 (0.58/0.50)					
28		Maximum drawbar pull RL/NL	4947/2282 (2244/1035)		4916/2217 (2230/1006)		4438/2534 (2013/1149)		
		Drawbar Pull, Standard Transmission @ 1 mph RL/NL	4186/2282 (1899/1035)		4154/2217 (1884/1006)		3792/2534 (1720/1149)		
29		Gradeability, Standard Transmission @ 1 mph RL/NL	35.9/31.5		30.2/27.6		23.5/27.6		
WT.		31	Weight, Standard Truck (2-Stg. LFL 84/127) NL	8170 (3705)		8910 (4040)		10300 (4671)	
			Weight, Standard Truck (2-Stg. LFL 84/127) RL	12170 (5520)		13910 (6308)		16300 (7392)	
	32	Axle Loading, Static Front/Rear NL	3855/4311 (1748/1955)		3695/5210 (1676/2363)		4207/6089 (1908/2761)		
		Axle Loading, Static Front/Rear RL	10518/1648 (4770/747)		12024/1881 (5453/853)		14064/2232 (6378/1012)		
TIRES & WHEELS	33	Tire Size, Front	7.00 x 12 - 12				28 x 9 - 15		
	34	Tire Size, Rear	6.00 x 9				6.50 x 10		
	35	Wheelbase	63.9 (1623)				66.9 (1700)		
	37	Ground Clearance, Lowest Point NL (w/RL subtract-6mm)	3.3 (84)				4.1 (104)		
	38	Ground Clearance, Center of Wheelbase NL	7.5 (190)				8.3 (210)		
	39	Service Brake - Method of Control/Operation	Foot/Hydraulic						
	40	Parking Brake - Method of Control/Operation	Hand/Mechanical						
	41	Battery Type	Maintenance Free						
POWERTRAIN	42	Volts/Cold Cranking Amps	12/475						
	43	Engine, Manufacturer/Model	PSI 2.4L						
	44	Permanent Output @ Rated RPM	62 (46) @ 2700 RPM						
	45	Torque @ Rated RPM	124 (17.1) @ 1600 RPM						
	46	Number of Cylinders/Displacement	4/2351 (143)						
	47	Transmission Type, Standard	Electronic Powershift						
		Standard Speeds, Forward - Reverse	1-1						
	49	Hydraulic Tank Capacity (Drain and Refill)	11.1 (42)						
	50	Fuel Tank Capacity (LPG & Dual Fuel Powered Units Only)	18.2 (69)						
	51	Auxiliary Hydraulic Pressure Relief for Attachments	2550 (17.6)						

\* This model may be equipped with an optional load weight system with an auxiliary display. The system must be calibrated for best results. The mast must be vertical and the forks at 350mm (14"). If these procedures are met the weight indicated on the display will be +/- 8%.

CERTIFICATION: Hyster lift trucks meet the design and construction requirements of B56.1-1969, per OSHA Section 1910.178(a)(2), and also comply with the B56.1 revision in effect at time of manufacture. Certification of compliance with the applicable ANSI standards appears on the lift truck.

Performance specifications / ratings are for truck equipped as described under Standard Equipment in this Technical Guide. Performance specifications are affected by the condition of the vehicle and how it is equipped, as well as by the nature and condition of the operating area. Specifications are subject to change and the proposed application should be discussed with your authorized Hyster Company Dealer. Limited by traction. For further information on this dimension, please contact your local Hyster® dealer.

<b>H40-50XT MAST SPECIFICATIONS</b>							
Maximum Fork Height (TOF) †	Overall Lowered Height	Overall Extended Height		Free-Lift (TOF)		Approximate Total Weight of Standard Equipped Truck*	
		w/ Load Backrest	w/o Load Backrest	w/ Load Backrest	w/o Load Backrest	H40XT	H50XT
in (mm)	in (mm)	in (mm)	in (mm)	in (mm)	in (mm)	lbs (kg)	lbs (kg)
<b>2-STAGE LIMITED FREE-LIFT (LFL) VISTA™PLUS MAST</b>							
129 (3290)	86 (2170)	178 (4515)	154 (3904)	5 (140)	5 (140)	7990 (3624)	8720 (3955)
<b>3-STAGE FULL FREE-LIFT (FFL) VISTA™PLUS MAST</b>							
171 (4350)	78 (1970)	220 (5570)	195 (4935)	29 (750)	54 (1390)	8270 (3751)	9000 (4082)
189 (4800)	84 (2120)	237 (6020)	213 (5385)	35 (900)	60 (1540)	8340 (3783)	9080 (4119)
194 (4950)	86 (2170)	243 (6170)	218 (5535)	37 (950)	62 (1590)	8370 (3797)	9110 (4132)
200 (5100)	90 (2270)	249 (6320)	224 (5685)	41 (1050)	66 (1690)	8410 (3815)	9150 (4150)
218 (5550)	96 (2420)	267 (6770)	242 (6135)	47 (1200)	72 (1840)	8500 (3856)	9240 (4191)
† Lift heights over 171.5" (4356 mm) max. fork height are considered highlifts and require reduced capacity and restricted back tilt. * Total approximate weights listed include mast, standard carriage, load backrest extension, pneumatic tires and 70 lbs. LP tank and tank bracket. RL = Rated Load      NL = No Load							

<b>H60XT MAST SPECIFICATIONS</b>							
Maximum Fork Height (TOF) †	Overall Lowered Height	Overall Extended Height		Free-Lift (TOF)		Approximate Total Weight of Standard Equipped Truck*	
		w/ Load Backrest	w/o Load Backrest	w/ Load Backrest	w/o Load Backrest	H60XT	
in (mm)	in (mm)	in (mm)	in (mm)	in (mm)	in (mm)	lbs (kg)	
<b>2-STAGE LIMITED FREE-LIFT (LFL) VISTA™PLUS MAST</b>							
126 (3209)	89 (2245)	175 (4430)	154 (3905)	5 (150)	5 (150)	10050 (4559)	
<b>3-STAGE FULL FREE-LIFT (FFL) VISTA™PLUS MAST</b>							
181 (4615)	87 (2195)	230 (5840)	208 (5260)	37 (965)	63 (1600)	10410 (4722)	
187 (4768)	91 (2295)	236 (5990)	213 (5410)	41 (1065)	65 (1655)	10460 (4745)	
211 (5368)	101 (2545)	260 (6590)	237 (6010)	51 (1315)	75 (1905)	10590 (4804)	
228 (5815)	107 (2695)	278 (7040)	256 (6495)	57 (1465)	80 (2055)	10770 (4885)	
† Lift heights over 171.5" (4356 mm) max. fork height are considered highlifts and require reduced capacity and restricted back tilt. * Total approximate weights listed include mast, standard carriage, load backrest extension, pneumatic tires and 70 lbs. LP tank and tank bracket. RL = Rated Load      NL = No Load							



# FEATURES AND OPTIONS

## STANDARD EQUIPMENT

---

PSI 2.4L LPG engine	Rubber floor mat
Electronic powershift transmission	High air intake
Monotrol® pedal directional control	Integral tie downs
2-stage LFL VISTA™PLUS mast	Operator restraint system
42" wide hook-type carriage with 48" tall load backrest	Aluminum core, anti-clog radiator
42" forks	Single pedal inch brake
6° forward / 6° back tilt	Hyster Stability System (HSS®)
3-function hydraulic control valve	Cowl-mounted mechanical hydraulic control levers
Integrated dashboard display	Fixed LPG tank bracket
Hydrostatic power steering	88" overhead guard
Non-suspension vinyl seat with non-cinch seat belt	UL classification LP
Electronic horn	Counterweight exhaust
Keyswitch start	1 year / 2,000 hour full truck warranty
Adjustable steer column	3 years / 6,000 hour powertrain warranty

## OPTIONAL EQUIPMENT

---

PSI 2.4L dual fuel engine	Full suspension seat – vinyl or cloth
Column-mounted directional shift lever	Red, high-visibility, non-cinch seat belt
High air intake with pre-cleaner	Glass or polycarbonate overhead guard rain top
Accumulator	Integral sideshifter
Keyless start (with auxiliary key switch)	Integral sideshifting fork positioner
Front and rear halogen or LED work lights	Dual inch brake pedals
Anti-clog plus radiator	Dual side view mirrors
Fire extinguisher	Audible alarm – reverse activated
Load weight display	Visible alarm – amber strobe
Swing-out LPG tank bracket	Visible alarm – blue spot light
TouchPoint mini-lever hydraulic controls	Various light packages
Return-to-set-tilt (cowl mounted mechanical levers only)	Overhead exhaust
Rear drive handle with horn button	Pneumatic shaped solid tires
10° forward / 6° back tilt	Non-marking pneumatic shaped solid tires
Clamping hydraulic control with detent	Wide tread
4-function hydraulic control valve	Tilt cylinder boots
84" overhead guard	Traction speed limiter
Operator cab kit with heater	Telemetry (3 levels)
12-volt power supply	L1: Wireless monitoring (cellular or WiFi)
Belly screen	L2: Wireless access (for use with operator swipe cards)
Frame mounted external tie downs	L3: Wireless verification (facilitates operator checklist functionality)

# INNOVATIVE TRUCKS ENGINEERED TO MEET THE MOST DEMANDING APPLICATIONS

For more than 80 years, Hyster has been conquering the world's most demanding applications. In the 1920's Hyster started as a manufacturer of lifting machines used in the rigorous logging industry of the United States' Pacific Northwest. A few years later the first forklift trucks were invented and the Hyster brand quickly gained its reputation for rugged quality. Hyster® lift trucks are designed to lower your cost of operations. Every truck we make — gasoline, LPG, diesel and electric — is purpose-built to excel in its application. Every truck is also backed by an unmatched network of specialists.



**Dealer Network** — Our Dealer Network can offer the expertise of fleet managers, parts suppliers, capital procurement specialists and trainers. Carefully chosen dealers fully understand customer applications, assist in selecting the right lift truck and provide fast, reliable support.



**Hyster Fleet Services** — Even if you operate other brands, we can manage your maintenance and replacement plan. We can offer complete fleet analysis, fleet history summary and a cost-effective proposal for replacement and scheduled maintenance.



**Parts** — With genuine Hyster® replacement parts and UNISOURCE™ parts for all makes of lift trucks, we are your one-stop source for lift truck parts. In fact, we offer more than 7 million part number crosses for most brands of materials handling and other in-plant mobile equipment.



**Rental Products** — When leasing or buying isn't a practical option, we have access to more than 14,000 units for short- and long-term rental. We'll help you maintain output in a cost-effective manner.



**Hyster Capital** — We can arrange solutions for special financing requirements, taking the difficulties out of buying the equipment you need. Whether you purchase or lease a new or used lift truck, Hyster Capital offers superior service and competitive rates.



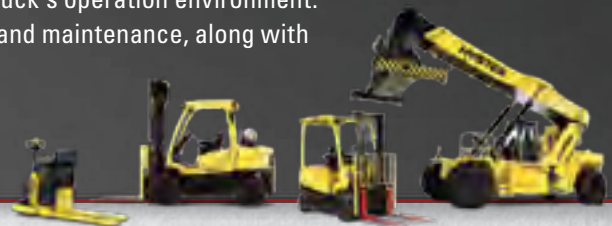
**Special Products Engineering Department (SPED)** — Different materials require different handling. That's why we can work with you to customize your lift trucks. From strobe lights to specially made forks, SPED has the tools to help you get the job done right.




**Operator Training** — Proper education in operating lift trucks minimizes the risk of injuries due to accidents while increasing productivity. Hyster offers OSHA-compliant materials that support the training of qualified operators.



**Service** — Your local Hyster® dealer offers a flexible, customized and comprehensive maintenance plan based on each lift truck's operation environment. Hyster service programs offer scheduled inspections and maintenance, along with quick, responsive service dispatched to your location.



Hyster, , and STRONG PARTNERS. TOUGH TRUCKS. and MONOTROL are registered trademarks in the United States and certain other jurisdictions. Hyster products are subject to change without notice.

All trucks shown with optional equipment. © 2016 Hyster Company. All rights reserved.

<sup>1</sup> Bono, R. and Pillsbury, S. (2016, January 21). 2016 Industrial Manufacturing Trends. Retrieved from: <http://www.strategyand.pwc.com/perspectives/2016-manufacturing-trends>

<sup>2</sup> Assessing the Financial Impact of Downtime, Vision Solutions, 2008

<sup>3</sup> Quinn, P. (2013, March 15). Why Modern Cars are Harder to Repair. Retrieved from: <http://schools-training.com/articles/modern-cars-harder-repair.html>